

EMI/RFI Shielding Flexible Conduit

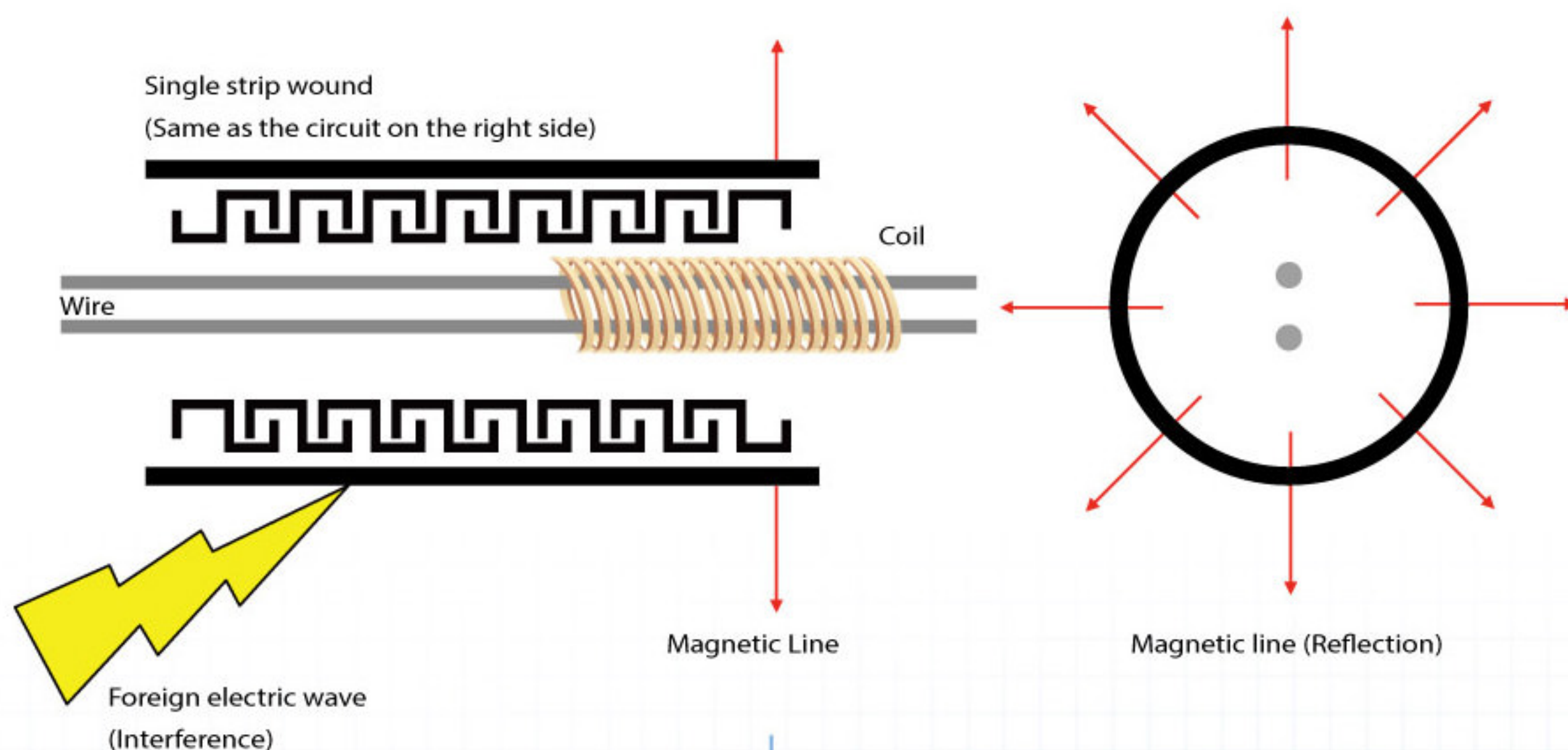
Reduced Electromagnetic Interference Enhanced Electromagnetic Shielding, Improved Electromagnetic Compatibility.

Since our development of "Electrical Appliance Signal Filter Conduit PAT. No. 39811" in 1993, BLISS keeps on developing conduit with better EMI shielding performance. Now, we're introducing the EMI series, providing the ability of screening electromagnetic waves and radio interference, addressing your diverse needs.

There are new electric devices appearing in the marketplace every day. In many circumstances, sensitive & sophisticated device circuit has to be isolated from any external interference, such as medical examine apparatus in hospital, and radar detecting instrument in military base, which should prevent from interferences of electromagnetic waves to show their top performances. Furthermore, in the regulations of CE, whatever electrical devices exporting to Europe must conform to their standards. The radiation of electrical device must be lower than the requirement to prevent the high electromagnetic radiation from endangering human body. BLISS flexible conduit is your best choice to decrease the electromagnetic radiation. Also, in the EU regulations of Electromagnetic Compatibility (EMC), electrical devices have to be radiation interference passive, let alone be active. By taking the advantage of BLISS EMI series, you are shielding yourself from the threats of electromagnetic radiations; meanwhile, the data transmission in your electrical devices won't have mutual interruptions with others. BLISS EMI series itself does not emit electromagnetic radiation, and it can screen the internal radiations inside of the conduit, and vice versa. Therefore, adding the protection of BLISS EMI conduit on your wiring system, you can enjoy not only the inherent fine wiring manageability of conduit, but also the eliminated electromagnetic emissions.

No more extra concerns for crosstalk.

Please use BLISS connectors to reach the ultimate screening efficiency. BLISS is your best one-stop solution.



What is EMI?

EMI Screen System (EMI= Electromagnetic Interference)
Apply flexible conduits to IT, telecommunication, and other electrical appliances:
Electromagnetic interference is also a kind of the environmental pollution. It can be an invisible killer to human body in the long run.



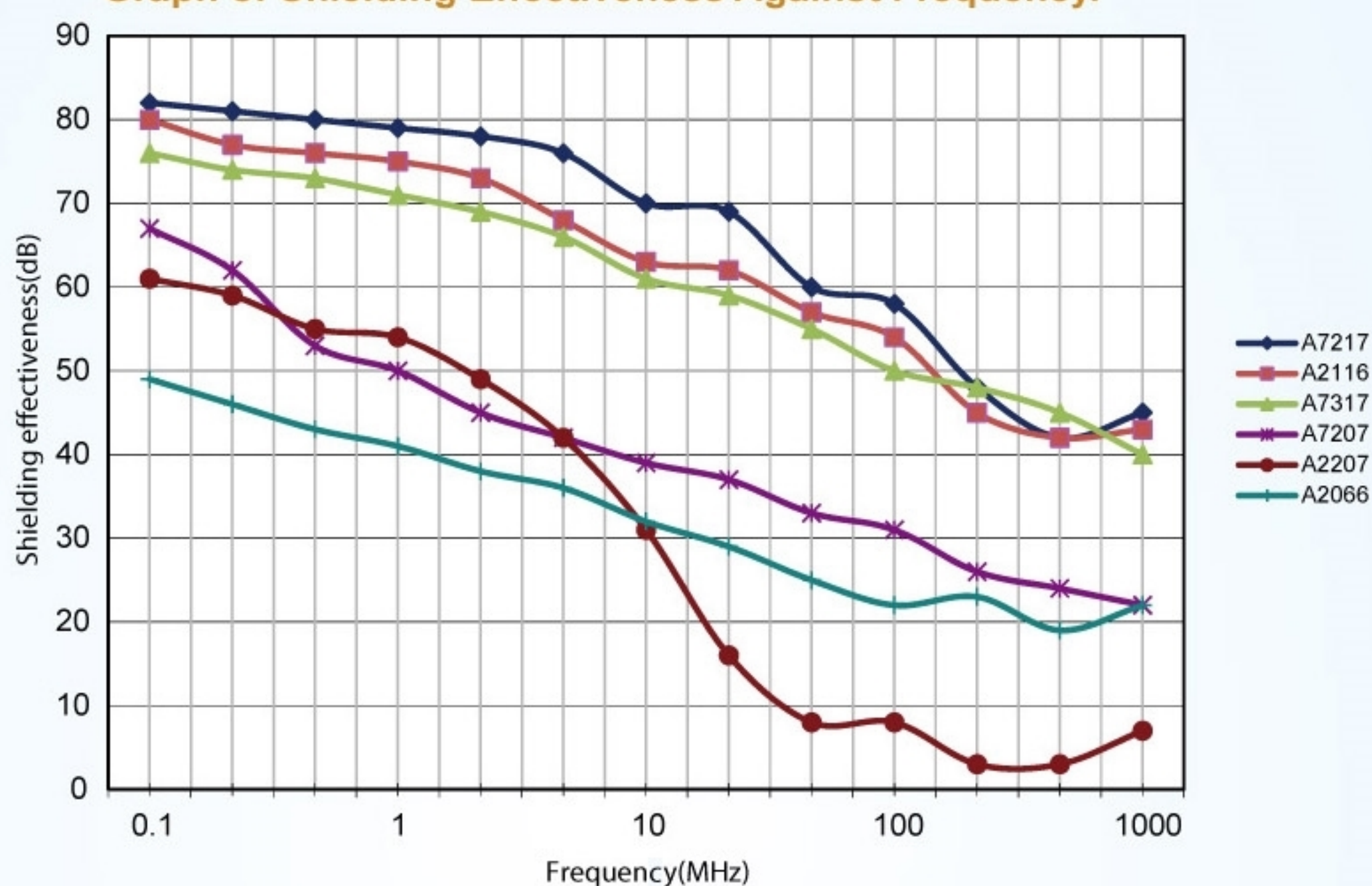
Description

1. The flexible conduit covers the wires and signal lines as the figure above, will produce strong magnetic lines around the conduit. Reflecting the foreign electric waves will protect the inner signals instead of interfering the communication quality and there will be no disorder for the digital signals. This enlarges the EMS of electric equipments.
2. On the other hand, the power cord is the origin of electric interference, the electric interference reflects out by the power cord. Using the flexible conduit to screen it will lower the EMI to the minimum level.
3. **EMI + EMS = EMC.**

Third Party Tests for EMI Shielding Effectiveness

To offer reliable screening efficiency, BLISS requested trusted ERA Technology Ltd. in U.K. for third-party test to offer you the trustworthy EMI shielding efficiency data. This test is based on IEC 1196-1, with 1/2", 0.5m sample, and the frequency range is from 100 kHz to 1GHz. Please see the following graphics for the test results. A2066 is the flexible conduit without special shielding braiding, the shielding efficiency of which is from 21.6 to 51.8 dB. Among the six samples tested, A7217 which has the best shielding efficiency from 39.6 to 79.6dB.

Graph of Shielding Effectiveness Against Frequency.



Graph of Transfer Impedance Against Frequency.

